

Barnsley Place Plan 2023 to 2025 Summary



Why are these our priorities?

Demand for early help support, children in need and child protection continues to grow significantly. Our children's emotional health and wellbeing is our primary focus.

More people are living in poor health and depend on health services for treatment, care and support. A significant proportion of ill-health is due to disease that is preventable.

We are seeing more people in crisis and emergency services are stretched which means delivering the same high quality care every time is challenging. We need to look at alternative models of support to make sure everyone receives the same positive experience and outcomes.

We want to support people in the comfort of their own homes. Demand for hospital beds is increasing particularly amongst people with frailty and dementia. These people are at risk of deconditioning in hospital so would be better supported at home.

If health and care partners consider how they operate as businesses they can have more of a positive impact on our local environment, economy and employment which will ultimately improve peoples health and wellbeing.

How will this support our communities?

There will be an open and judgement free access point for families to ask questions and get the support they need to live happily and for their children to thrive.

There will be preventative support offered that will be based on people's needs and strengths. This will support communities no matter where they live in Barnsley.

We will shorten waiting times, allow more people to access GP appointments and reduce the number of delays people experience waiting for treatment.

We will build resilience in our people and help them live independently at home for longer by delivering more person-centred and community oriented support.

We will work with different sectors to increase education, training and employment opportunities. This will help build a more stable and inclusive economy and better local environment.

Priority

Objective

Deliverables

Measuring success

Best start in life for children and young people



We will improve access and the connections between families, professionals, services, and providers, and put relationships at the heart of family support

- Create family hubs
- Deliver SEND improvement plan and actions
- Improve access to Children's and Young Peoples Mental Health Services
- Increase children's access to epilepsy specialist nurses
- Make sure children with a learning disability/autism receive access to care in first year
- Improve asthma care for children

- Increase the number of parents and carers accessing family hub activities
- Increase in the number of whole family early help assessments
- Increase in the number of parents and carers reporting that they understand the family hubs offer by March 2025
- Improved access to perinatal mental health services

A joined-up approach to ill-health

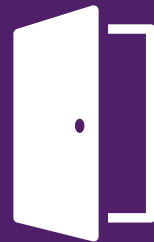


We will offer every smoker in Barnsley support to stop, making every contact count and increase the support we provide to help people to address the drivers of inequalities.

- Further embed the [Making Every Contact Count framework](#) across our services
- Deliver the medicines optimisations programme PROTECT
- Provide more opportunities for physical activity and healthy food
- Link up stop smoking services to understand impacts on people
- Establish screening and referral processes in locations outside of standard places of care

- Greater awareness of the risks of smoking, uncontrolled high blood pressure and cholesterol
- Increased uptake of smoking cessation support
- Increased identification of hypertension and reduced variation in identification rates in different locations
- Improved management of blood pressure and pre-diabetes

Better and fair access

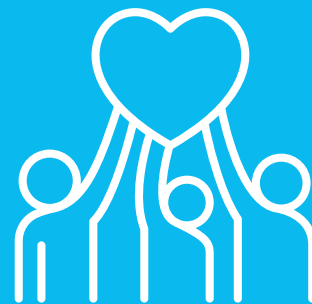


We want to improve our services to make sure people can access the right care when they need it most.

- Develop and implement an Integrated Urgent Care Front door (secondary and primary care)
- Build capacity and capability to deliver trauma informed support
- Implement the Barnsley Mental Health Delivery Plan
- Better support those with substance use problems by bringing together current support offers
- Implement new GP contract requirements to recover access

- Improved A&E waiting times
- Reduced ambulance call out times and handover delays
- Improved experience of booking GP appointments
- Reduce the number of people attending A&E for mental health related issues including alcohol and substance abuse

Coordinated care in the community



We will provide more proactive care and support for people most at risk of poor health outcomes, help people to live as well as possible until they die and to die with dignity

- Create an anticipatory care register
- Work with the VCSE sector to provide post diagnosis support to those with dementia
- Continue to shape services in response to Think Local Act Personal programme
- Roll out ReSPECT across all partners in Barnsley
- Support people with bereavement by establish a new network who will develop a long term strategy

- Improved screening and assessment of frailty
- Increased uptake of Talking Therapies for older people in Barnsley
- Increased utilisation of virtual ward capacity
- Increase capacity across the voluntary, community and social enterprise sector
- Fewer hospital admissions in the last three months of life
- Improved equity of access to end-of-life care and support

Improve impact on local environment, economy and employment



We will establish a network of large organisations across health and social care to improve our impact by the way we do our business

- Complete mapping of where contacts are made and money is spent
- Build partnerships with schools, colleges and other education providers
- Develop an understanding of the make up of our workforce, including social gradient and representation of protected characteristics

- Workforce is more reflective of the population of Barnsley
- More money is invested in the local supply chain
- Continued working within planetary boundaries
- Reduced waste and emissions and use more renewable energy